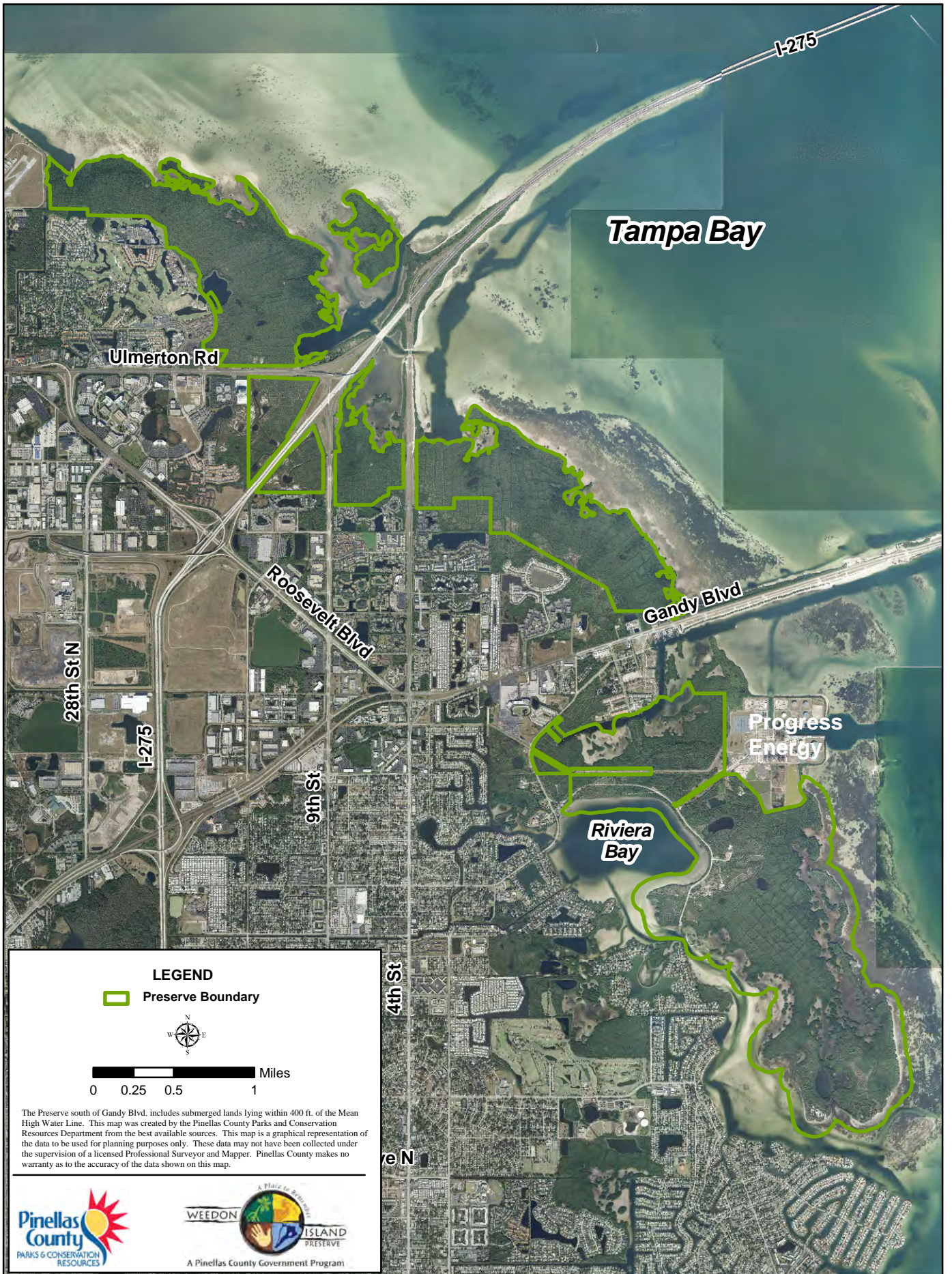



# WEEDON ISLAND PRESERVE



**LEGEND**

 Preserve Boundary



 Miles  
0 0.25 0.5 1

The Preserve south of Gandy Blvd. includes submerged lands lying within 400 ft. of the Mean High Water Line. This map was created by the Pinellas County Parks and Conservation Resources Department from the best available sources. This map is a graphical representation of the data to be used for planning purposes only. These data may not have been collected under the supervision of a licensed Professional Surveyor and Mapper. Pinellas County makes no warranty as to the accuracy of the data shown on this map.

